

## NS8 Heavy Duty Arbors

### Instructions and Parts List



The NS8 is a heavy duty, cast aluminum shop arbor specifically designed for wet grinding and polishing operations. It can be bolted to any workbench and the motor mounted from the rear or underneath. The NS8 Long Shaft has an extended shaft for when more clearance is needed.

- Holds wheels up to 8" diameter
- Bench-top design
- Rubber mounted sealed ball bearings
- Cast aluminum body won't crack or warp
- Easy maintenance

## Setup

- Check to make sure you have received the following parts:
  - (1) NS8 Arbor with pre-installed drive belt.
  - (1) Accessory Package containing:
    - (4) Flanges
    - (2) Aluminum Spacers
  - (1) Operators Manual and Warranty card

*Note: This unit does not come with a motor. It may be ordered separately.*

*If any parts are missing, please contact your dealer or the factory immediately.*

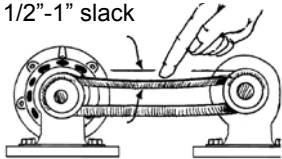
### IMPORTANT

Read the following instructions before assembly or use. Failure to follow instructions can result in damage to the machine or injury to the operator.

## Arbor & Motor Installation

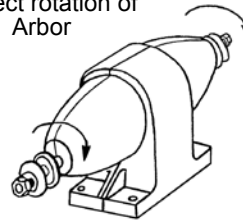
- Mount the Arbor to a solid work surface or bench using four 1/4" diameter bolts (length of bolts will depend on the bench top). *Note: This arbor is designed to run with a 1/3 HP, 1725 RPM motor.*
- Install drive pulley on motor. We suggest using a 2" x 1/2" pulley for most operations.
- Secure motor to the bench or work surface allowing for belt length and adjustment.
- Install belt and adjust motor to obtain correct belt alignment and tension. *Do not overtighten the belt as this can lead to excessive noise and premature bearing wear.*

Adjust belt tension for  
1/2"-1" slack



Bolt Motor and arbor securely  
to work surface!

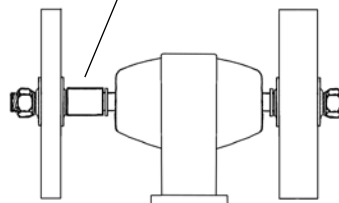
Correct rotation of  
Arbor

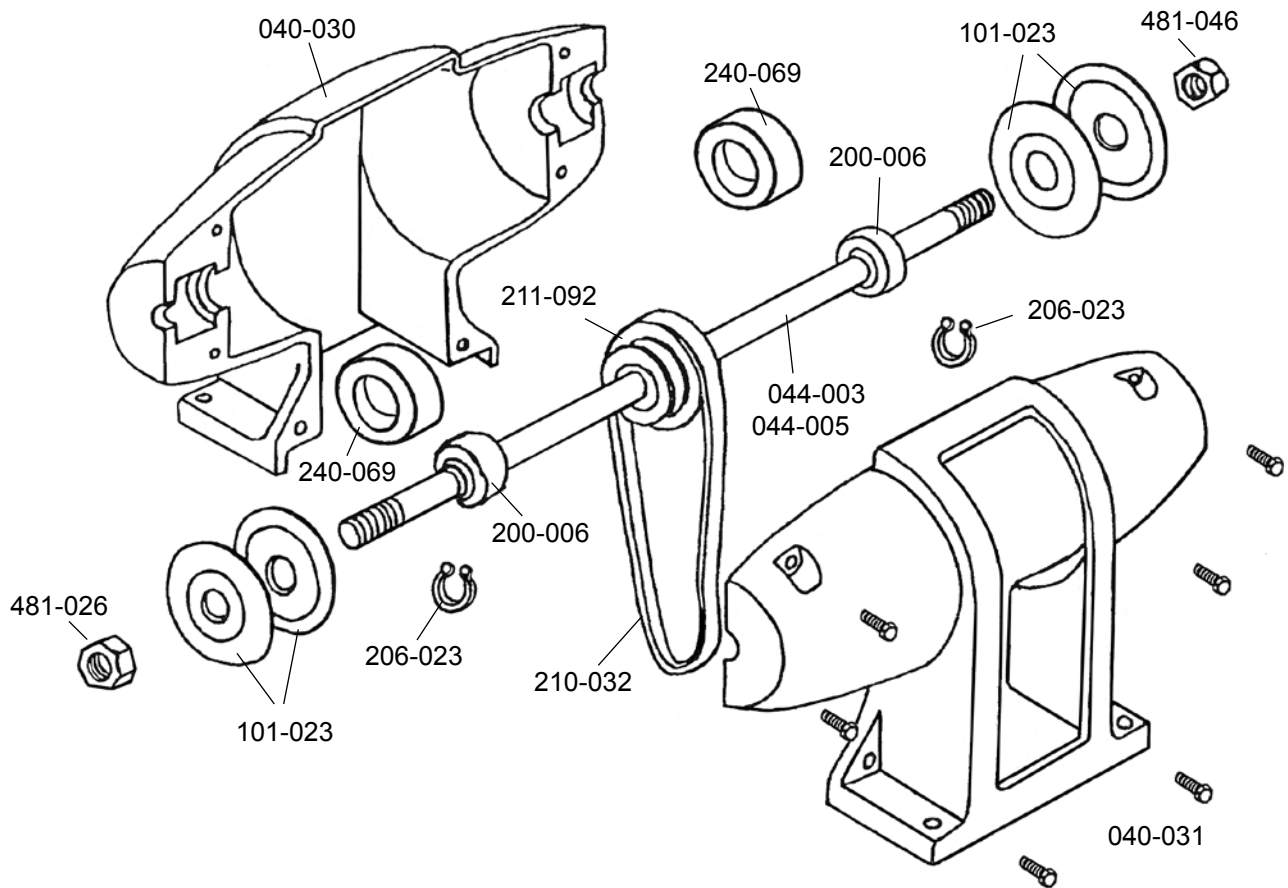


## Operation & Maintenance

- Mount wheels securely using appropriate flanges. For narrow wheels on the NS8, use the aluminum spacer between the retaining ring and the flange. Tighten shaft nuts securely.
- To mount wheels on the NS8 Long Shaft, use shaft nuts on either side of the wheel flanges.
- Use a water drip system or pump to provide coolant to the wheels. A splash shield may be required.
- When grinding stone using Silicon Carbide wheels, and arbor speed of 1725 RPM gives good results.
- For polishing, reduce the arbor speed by using the larger pulley on the arbor. Proper polishing speed depends upon the material but can best be accomplished at speeds from 850 - 1725 RPM as needed.
- The Arbor should be cleaned periodically with a damp cloth and the belt checked for wear.
- Replace damaged belt or bearing if required.

Use spacer for thin  
wheels





## PARTS LIST

<u>Item #</u>	<u>Description</u>
040-030	Front Casting
040-031	Rear Casting
044-003	Arbor Shaft (NS8)
044-005	Arbor Shaft (NS8 Long Shaft)
101-023	3" x 3/4" Flange
105-008	1" Aluminum Spacer (not shown)
200-006	Ball Bearing w/ set screw
206-032	Retaining Ring
210-032	Drive Belt 4L280
211-092	3-Step Pulley
240-069	Bearing Isolator
481-026	Right Hand Arbor Nut, 3/4" x 16
481-046	Left Hand Arbor Nut, 3/4" x 16